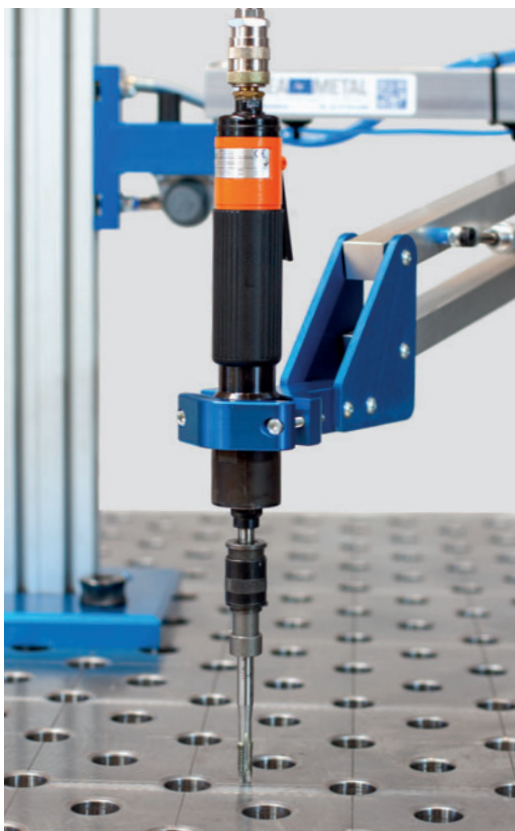


CREA-TAPP

THREAD TAPPING DEVICE



FAST, PRECISE AND VERTICAL THREADING



With the CREA-TAPP thread tapping device all your employees will be able to cut precise and vertical threads. All threading works quickly and easily.

The strong pneumatically operated engine cuts threads from M4 to M12. The ball bearing supported CREA-TAPP keeps the pneumatic engine in a vertical position and transduces the torque completely, significantly reducing wear and tear and damages to the cutting tools. The device has a comfortably large working radius of 800 mm.

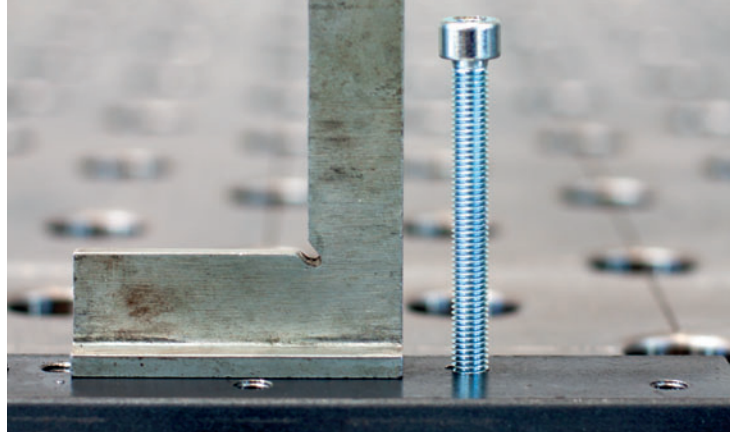


USE THE ADVANTAGES OFFERED BY THE CREA-TAPP THREAD TAPPING DEVICE

- Cutting or shaping threads from M4 to M12
- Fast, vertical and precise
- Torque-free, neutral weight
- Less wear and tear, no tool breakage
- For the welding bench and/or hole table, work bench and the multifunctional drilling centre CREA-DRILL
- Fast switching system for easily switching tools

CREA-TAPP

THREAD TAPPING DEVICE



Possibilities of mounting

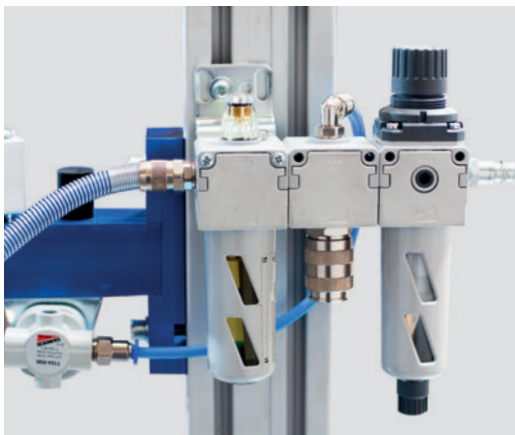
- The CREA-TAPP is suited for mounting on the work bench, the welding bench and hole table (system 16/28 mm) as well as the multifunctional drilling center CREA-DRILL.
- The mounting on the work bench is performed using a 500 mm high stand.
- Alternatively, the CREA-TAPP may be mounted on a pillar drilling machine or the wall.

Pneumatic engine

The strong pneumatic engine has forward and reverse positions with a push-pull control. Allows for cutting and shaping threads from M4 to M12.

Easy handling

The CREA-TAPP eliminates all exertion, since the device completely transduces the entire torque and the weight. The ball bearing supported design and the large working radius of 800 mm make it comfortably easy to swivel the CREA-TAPP into the desired cutting position.



Design

The CREA-TAPP thread tapping device convinces by its sturdy and durable design. All moving parts are supported by ball bearings. The machine holder is universal. Electrical threading machines or drilling machines are also mountable. The travel is 360 mm. The balance is set via the pressure reducer. The tools are mounted using a quick coupler.

Optional

- Threading engine for threads from M4 to M16
- Control with shift key
- 500 mm stand with a fastening plate for hole tables (system 16/28 mm)

TECHNICAL DATA

- cutting threads from M4 to M12
- forward and reverse positions with push-pull control
- weight 10 kg
- working radius of 800 mm
- travel of 360 mm
- air consumption 310 l/min